



DFT-JR SERIES

Cost-Efficient 1RU Solution For Up To 16 3G/HD/SDI Signals Over Fiber

The new DFT-JR Series from Joseph Electronics provides for up to 16 channels of pristine uncompressed 3G/HD/SDI video on one or two singlemode fibers (depending on configuration). Featuring a compact 1RU fanless enclosure with redundant power supplies, up to eight two-channel modules can be fitted to handle signal counts from 4 to 16. The direction of each 2-channel module can be easily changed in the field to take care of last minute changes.

Transmit modules are red and receive modules are blue. Red modules (TX) are slot specific and clearly labeled. Blue modules (RX) are generic and can go in any slot. The modules support SMPTE 424, SMPTE 292, SMPTE 259, SMPTE 297, DVB-ASI, and MAD1. Modules can also operate in non-reclocking mode to handle any signal from 50Mb/s all the way up to 3 Gb/s.

A Joseph's exclusive is the Bypass Channel. On all DFT-JR systems, with the exception of the 16 channel version, users can gain access to an additional fiber path for adding signals. On 2-fiber versions, Gig Ethernet can be added.

Units can be custom configured with I/O connections on the front or rear of the enclosure. LEDs show signal presence.

FEATURES & APPLICATIONS

FEATURES

- Convenient 2-Channel
- Modules Support:
 - SMPTE 424
 - SMPTE 292
 - SMPTE 259
 - SMPTE 297
 - DVB-ASI
 - MAD1
- Up to 16 Channels in 1RU
- Simple, Intuitive Operation
- Field Reconfigurable
- Fanless Operation
- Dual Power Supply
- 1 or 2 Singlemode Fiber Versions Available
- Optical Redundancy (optional)
- By-Pass Channel (optional)

APPLICATIONS

- Truck Interconnects
- Studio to Control Room Links
- Announce Booths
- Cross Campus Links
- Distance Learning
- Tele-Medicine
- D-ENG/SNG

The DFT-JR Series is ideal for trunking HD video signals. Whether for truck-to-truck interconnects, video feeds for event announce booths, or any HD video distribution, the DFT-JR Series leverages the dramatic weight savings and high bandwidth of fiber to deliver pristine video signals over far greater distances than copper.

Trust Joseph electronics for your signal transport and any other broadcast hardware needs.



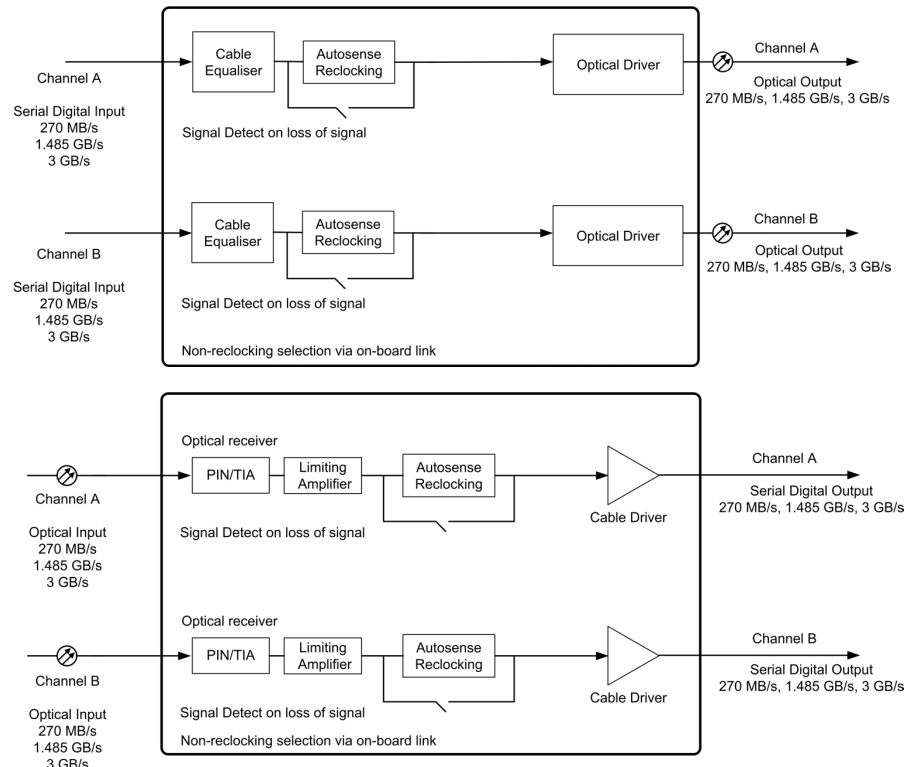
The ability to reconfigure your video feeds on-the-go has gone from being a convenience to being an absolute necessity. With nothing more than a basic screwdriver, users can quickly and easily make the last minute changes that inevitably come up on remote broadcasts.

Fanless operation ensures that the DFT-JR Series is capable in a quiet studio environment as well as out in the field.

Custom features such as the front or rear placement of the fiber connectors, single or dual fiber operation, optical redundancy, and By-Pass channels, ensure that our customers get exactly what they need rather than pay for features that they don't want or will never use.

DFT-JR. Moving HD video has NEVER been easier.

TX and RX Module Schematics



SPECIFICATIONS

VIDEO

Standards SMPTE 424M, 292M, 259M & 297M, DVB-ASI & MADI

*Auto rate selection for 3G, HD & SD-SDI

Connector 1.75Ω BNC / Channel
Return Loss >15 db @ 1.485 Gb/s
Signal Level 800 nV +/- 10%
DC Offset 0 +/- 0.5V
Jitter <0.15 UI Line Equalized
Format Factory Default as Reclocked. Non-Reclocking Mode

MECHANICAL, ENVIRONMENTAL

Dimensions (LxWxH) 1 RU 19" x 9"
Weight 6 lbs.
Temperature Range -30 to +70 C
Humidity Range up to 90% (non-condensing)
Power Input 2x 4-pin XLR
Pwer rating, nominal 50w max@12VDC
Power Requirement <10w @12VDC
Signal Detect LED on for loss of signal

OPTICAL

Connector ST Standard. Others Available
Fiber Singlemode
Wavelength 1270 - 1610nm
Optical Power -2 dBm @ 1310/1550
 0 dBm @ CWDM
Sensitivity > -25.0 dBm @ 3Gb/s
 > -25.5 dBm @ 1.485Mb/s
 > -26.0 dBm @ 270Mb/s
Max Input Power > -1 dBm
Data Rate 50Mb/s to 3Gb/s

Conforms with 89/366/EEC, EN 61000-6-1, EN 61000-6-2, Class 1 laser product, and RoHS 2002/95EC

2-Channel HD Video Modules are Field Configurable

